

## ORGANIZATION OF ISPRS

ISPRS is a Society composed of about 100 national and 10 regional societies and organizations, led by a Council for policy direction and management in accordance with Resolutions set forth by its General Assembly, which convenes every four years in a Congress. Organizations may join ISPRS as:

**Ordinary Members:** Representing the whole community of photogrammetry, remote sensing and spatial information specialists in the country or region.

**Associate Members:** Representing a community that has a strong interest in participating in the Society's affairs, and which is not represented by the Ordinary Member organization of the country.

**Regional Members:** A multi-national association established for the purpose of considering issues of common interest, promoting regional cooperation, convening regional conferences etc.

**Sustaining Members:** Organizations, institutions, agencies or individuals, involved in Society related commerce or engaged in research and/or education and who contribute financial support for the Society's objectives.

**Honorary Members:** Up to ten living individuals recognized for distinguished service to the ISPRS and its aims.

Individuals may participate in the activities of the Society through affiliation of an ISPRS Member organization. Individuals interested in contributing to the scientific and technologic activities of the Society are encouraged to join one of the Working Groups which operate under the leadership of the Eight Technical Commissions.

## ISPRS FOUNDATION

The ISPRS Foundation is intended to improve the ability of ISPRS to satisfy its aims and objectives, by administering a broadly-based international program of fund raising to provide grants to qualified individuals and organizations, who are pursuing and/or applying knowledge for advancing the sciences and technologies associated with the disciplines embodied by ISPRS. The Foundation will raise, invest and grant funds on an unrestricted basis for this purpose. It will contribute significantly to the efforts of ISPRS in international cooperation and technology transfer.

## ISPRS COUNCIL 2008-2012

**President: ORHAN ALTAN (TURKEY)**

Email: oaltan@itu.edu.tr

**Secretary General: CHEN JUN (CHINA)**

Email: chenjun@nsdi.gov.cn; chenjun\_isprs@263.net

**First Vice President: IAN DOWMAN (UK)**

Email: idowman@cege.ucl.ac.uk

**Second Vice President: AMMATZIA PELED (ISRAEL)**

Email: peled@geo.haifa.ac.il; peled@rjb-3d.com

**Congress Director: CLIFF OGLEBY (AUSTRALIA)**

Email: cogleby@unimelb.edu.au

**Treasurer: MIKE RENSLOW (USA)**

Email: renslow76@hotmail.com

## TECHNICAL COMMISSIONS 2008-2012

**COMMISSION I** Image Data Acquisition - Sensors and Platforms

**President:** Naser El-Sheimy (Canada)

**Email:** naser@geomatics.ucalgary.ca

**COMMISSION II** Theory and concepts of spatial information science

**President:** Wenzhong Shi (Hong Kong, China)

**Email:** lswzshi@polyu.edu.hk

**COMMISSION III** Photogrammetric Computer Vision and Image Analysis

**President:** Nicolas Paparoditis (France)

**Email:** nicolas.paparoditis@ign.fr

**COMMISSION IV** Geodatabases and Digital Mapping

**President:** Marguerite Madden (USA)

**Email:** mmadden@uga.edu

**COMMISSION V** Close-Range Sensing: Analysis and Applications

**President:** Jon Mills (UK)

**Email:** j.p.mills@ncl.ac.uk

**COMMISSION VI** Education and Outreach

**President:** Martien Molenaar (The Netherlands)

**Email:** molenaar@itc.nl

**COMMISSION VII** Thematic Processing, Modeling and Analysis of Remotely Sensed Data

**President:** Wolfgang Wagner (Austria)

**Email:** commission7.isprs@ipf.tuwien.ac.at

**COMMISSION VIII** Remote Sensing Applications and Policies

**President:** Haruhisa Shimoda (Japan)

**Email:** smd@keyaki.cc.u-tokai.ac.jp

## ISPRS Headquarters

Secretariat

National Geomatics Center of China

No.1 Baishengcun, Zizhuyuan, Beijing 100044, PR CHINA

E-mail: isprs@nsdi.gov.cn



International Society for Photogrammetry and Remote Sensing  
International Gesellschaft für Photogrammetrie und Fernerkundung  
Societe Internationale de Photogrammetrie et de Teledetection

# INTERNATIONAL SOCIETY FOR PHOTOGRAMMETRY AND REMOTE SENSING



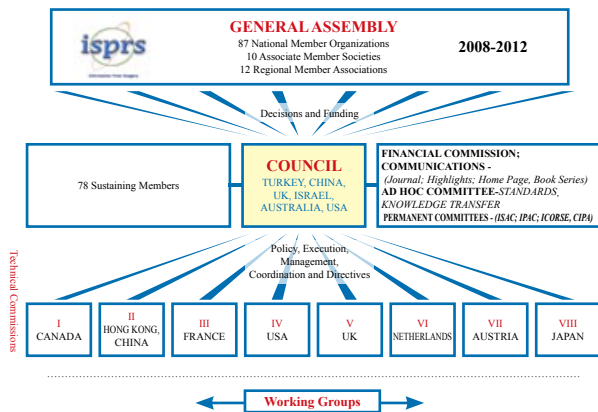
Image of Beijing National Stadium (Bird's Nest/Olympic Stadium) and Water Cube(National Swimming Center)

## WHAT IS ISPRS?

ISPRS is an international non-governmental organization that enhances international cooperation between the worldwide organizations with interests in photogrammetry, remote sensing and spatial information sciences. Established in 1910, ISPRS is the oldest international umbrella organization in its field, which may be summarized as addressing "information from imagery".

ISPRS achieves its aims by:

- Advancing knowledge in the areas of interest of ISPRS by encouraging and facilitating research and development, scientific networking and inter-disciplinary activities
- Facilitating education and training with particular emphasis in less developed countries
- Enhancing public recognition of the contributions of photogrammetry, remote sensing and spatial information for the benefit of humankind and the sustainability of the environment



"ISPRS is a Society of National Societies and Organizations"

The ISPRS scientific and technical programs are organized by eight Technical Commissions. Each Commission is sponsored by an ISPRS Member organization for the four-year period between Congresses. The eight Technical Commissions have established more than 60 Working Groups which are responsible for particular topics within the Commissions' areas of responsibility. All Technical Commissions will hold a Symposium within their country in 2010. Smaller workshops will be organized by the Working Groups before the 2012 Congress.

## PHOTOGRAMMETRY

Photogrammetry is used for the derivation of 3D information of points, lines and areas on the terrain from aerial and satellite images for development of databases for digital mapping and spatial information systems (SIS). The data can be used in digital, graphical and orthophoto forms as maps, charts and overlays. Photogrammetry is also used for the measurement of smaller objects from close range images, and other non contact techniques, by providing precise 3D coordinates of dense networks of points, that are used to create virtual reality 3D scenes with real-life textured models, which can also be portrayed dynamically.

## REMOTE SENSING

Remotely sensed observations of the Earth from air- and space-borne sensors provide the basis for mapping of human and natural activities; for monitoring change; for assessing and mitigating disasters; for identifying and assessing non-renewable resources; for monitoring temporal changes in weather, land and sea cover; and for many other applications. Spatial and semantic descriptions of objects and features are derived from 3D measurements of imagery, and the interpretation of their spectral and semantic attributes from panchromatic, multispectral and other remotely sensed data.

## SPATIAL INFORMATION SCIENCES

The description and location of objects and features obtained from images, as well as temporal relationships between physical objects and processes, can be integrated with other data by Spatial Information Systems (SIS) for analysis, portrayal and representation. Such SIS can assist in urban and infrastructure planning, land and resource management, monitoring the environment, understanding many natural phenomena.

## ISPRS PUBLICATIONS

**The International Archives of the Photogrammetry, Remote Sensing and Spatial Information Sciences** contain the proceedings and the scientific and technical presentations of all ISPRS Congresses, Symposia and selected Conferences and Workshops.

**The ISPRS Journal of Photogrammetry and Remote Sensing** is the official peer reviewed publication of the Society. It is published six times per year and contains scientific and technical articles and reviews.

**The ISPRS Highlights** is the official bulletin of the Society, published and distributed electronically 3 times per year. It contains such items as current news, references to the ISPRS Annual Reports, reports from ISPRS activities, keynote speeches, book, project and technology reviews, minutes of Council and Technical Commission meetings.

**The ISPRS Book Series** includes high quality refereed papers from ISPRS Congresses, Symposia or Workshops, to provide information to a wider international audience.

## INTERNATIONAL LINKS

ISPRS is an active member of the United Nations Committee on the Peaceful Uses of Outer Space (COPUOS), the Group on Earth Observation (GEO), the Committee for Earth Observation Satellites (CEOS), the International Council of Science (ICSU) and has significant relations with several arms of the UN, related international scientific societies and the International Organization for Standardization (ISO). ISPRS works with the UN Office of Outer Space Affairs to organize workshops and has representatives on CEOS and ISO Working Groups.

