



## Corporate Overview

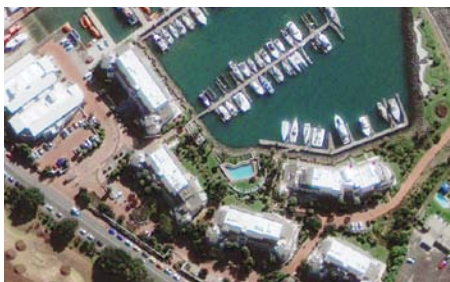
GeoEye is a leading source of geospatial information and insight for decision makers and analysts who need a clear understanding of our changing world to protect lives, manage risk, and optimize resources. Each day, organizations in defense and intelligence, public safety, critical infrastructure, energy, and online media rely on GeoEye's imagery, tools, and expertise to support important missions around the globe. Widely recognized as a pioneer in high-resolution satellite imagery, GeoEye has evolved into a complete provider of geospatial intelligence solutions. GeoEye's ability to collect, process, and analyze massive amounts of geospatial data allows our customers to quickly see precise changes on the ground and anticipate where events may occur in the future.

## GeoEye's Capabilities and Solutions

**Premium Imagery** – Having a precise view helps decision makers respond to a rapidly changing world. GeoEye's long history of collecting the best commercial imagery allows users to make better decisions using accurate visual records. GeoEye collects tens of millions of square kilometers of Earth imagery annually with its own satellite and aerial assets.

**Online Access Tools** – As the volume of geospatial data grows, we understand that managing it and putting it into the hands of users quickly and easily is essential. GeoEye tools allow users to Catalog, Process, Discover, and Disseminate accurate location information and to deliver insight when and where they need it.

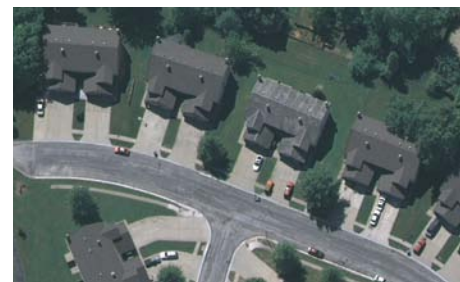
**Expertise** – As demand for geospatial insight grows, GeoEye is unique in the industry with over 23 years of experience delivering advanced image-processing products and engineering analysis. Our GeoEye Analytics experts combine massive amounts of physical and human geography data to help customers anticipate where important changes might occur.



GeoEye-1 .50-meter resolution



Predictive analysis



MJ Harden aerial platform

Elevating Insight



## GeoEye At-a-Glance

### Headquarters:

Herndon, Virginia

### Operation Facilities and Offices:

McLean, Virginia

Thornton, Colorado

St. Louis, Missouri

Mission, Kansas (MJ Harden)

Singapore

### Imaging Satellites and Aircraft:

GeoEye-1, IKONOS, GeoEye-2 (future),

2 aircraft with Digital Mapping Cameras,

1 aircraft with LiDAR sensor

### Imagery Archive:

Over 500 million sq. km.

### Product Orders and Information:

Customer Service 1.800.232.9037

### Website:


[www.geoeye.com](http://www.geoeye.com)

## For More Information

 800.232.9037

International +1.703.480.5670

 [www.geoeye.com](http://www.geoeye.com)

 Contact Your GeoEye  
Sales Representative

## GeoEye Imagery Sources

**GeoEye-2** (operational in 2013) will be GeoEye's next-generation, high-resolution Earth-imaging satellite with a resolution of .33-meters (13 inches).

**GeoEye-1** is the highest-resolution and most-advanced commercial imaging satellite, capturing image detail with a resolution as fine as .41-meters (16 inches). GeoEye-1, commissioned in February 2009, orbits the Earth 15 times per day at an altitude of 681km (423 miles).

**IKONOS** was the world's first color sub-meter imaging satellite, which captures image detail at .82-meter resolution (32 inches) for a wide range of geospatial applications.

**MJ Harden™**, a GeoEye company, provides high-resolution aerial imagery with ground resolution as fine as 1.5 inches. MJ Harden owns and operates aircraft equipped with the latest in LiDAR technology and the Digital Mapping Camera (DMC®) system from ZEISS/Intergraph.

## Market Applications

Our capabilities serve commercial and government demand worldwide for geospatial information in:

- National Security and Intelligence
- Critical Infrastructure
- Aviation and Marine
- Oil and Gas
- Environmental Monitoring
- Online Mapping
- Real Estate and Insurance
- State and Local Governments
- Agriculture and Forestry

## Partners and Affiliates

Our products are available through direct sales and a worldwide network of value-added resellers, regional distributors, and select strategic partners. To find a partner in your region, go to [www.geoeye.com/partners](http://www.geoeye.com/partners).

